

Contact Profile Screen Painting Elements

The Contact Profile screen can have elements painted in the Details (Green), Footer (Lime Green), and Button (Yellow) portions of the screen. See below for all of the possible elements.

In any field that is setup as a multi-select field, if a manual entry does not match any of the configured values, then the multi-select list of values for the field is displayed.

Details			
<i>Element</i>	<i>Type</i>	<i>Default Prompt Field Name</i>	<i>Comment</i>
ADDR_CLEANSSED_STATUS	CHECKBOX	CLEANSSED	
ADDRESS_TYPE_DESC	DISPLAY ITEM		
ADDRESS1_IB	BUTTON		
ADDRESS1	TEXT ITEM		
ADDRESS2	TEXT ITEM		
ADDRESS3	TEXT ITEM		
ADDRESS4	TEXT ITEM		
AR_NO_CENTRAL	TEXT ITEM	CENTRAL A/R NO.	
AR_NO_MAIN_IB	BUTTON		
AR_NO1	DISPLAY ITEM	A/R NO.	
BILLING_INS_MAIN_IB	BUTTON		
BIRTH_DATE_IB	BUTTON		
CB_LINK	LIST		
CHAIN_CODE	TEXT ITEM		
CHAIN_CODE_IB	BUTTON		
CITY	TEXT ITEM	CITY	
CITY_EXT	TEXT ITEM	EXT.	
CON_PHONE_TYPE1_IB	BUTTON		
CON_PHONE_TYPE2_IB	BUTTON		
CON_PHONE_TYPE3_IB	BUTTON		
CON_PHONE1_IB	BUTTON		
CON_PHONE2_IB	BUTTON		
CON_PHONE3_IB	BUTTON		
CONTACT_LABEL	DISPLAY ITEM	CONTACT	
COUNTRY_CODE	TEXT ITEM	COUNTRY	
COUNTRY_CODE_IB	BUTTON		
DISTRICT	DISPLAY ITEM	DISTRICT	District associated with the address.
EMAIL_YN	CHECKBOX	ALLOW EMAIL	
F_ACTIVE_YN	CHECKBOX	ACTIVE	
F_ADDRESS1	TEXT ITEM	ADDRESS	

F_ADDRESS2	TEXT ITEM		
F_ADDRESS3	TEXT ITEM		
F_ADDRESS4	TEXT ITEM		
F_AR_NO_MAIN	TEXT ITEM	A/R NO.	
F_BILLING_INS_MAIN	TEXT ITEM	FOLIO INSTRUCTIONS	
F_BIRTH_DATE	TEXT ITEM	BIRTH DATE	
F_BL_MSG_MAIN	TEXT ITEM	RULE	
F_CITY	TEXT ITEM	CITY	
F_CON_PHONE_TYPE1	TEXT ITEM		
F_CON_PHONE_TYPE2	TEXT ITEM		
F_CON_PHONE_TYPE3	TEXT ITEM		
F_CON_PHONE1	TEXT ITEM		
F_CON_PHONE2	TEXT ITEM		
F_CON_PHONE3	TEXT ITEM		
F_COUNTRY	TEXT ITEM	COUNTRY	
F_DEPARTMENT	TEXT ITEM		
F_ENVELOPE_GREETING	TEXT ITEM	ENVELOPE GREETING	
F_FIRST	TEXT ITEM	FIRST	
F_INACTIVE_REASON	TEXT ITEM	REASON	
F_KEYWORD	TEXT ITEM	KEYWORD	
F_KEYWORDS	TEXT ITEM		
F_LANGUAGE	TEXT ITEM	LANGUAGE	
F_LAST	TEXT ITEM	LAST NAME	
F_LETTER_GREETING	TEXT ITEM	SALUTATION	
F_MAIL_LIST	CHECKBOX	MAILING LIST	
F_MIDDLE	TEXT ITEM	MIDDLE	
F_POSITION	TEXT ITEM	POSITION	
F_SALESREP	DISPLAY ITEM		
F_SREP_CODE	TEXT ITEM	OWNER	
F_STATE	TEXT ITEM	STATE	
F_TERRITORY	TEXT ITEM	TERRITORY	
F_TITLE	TEXT ITEM	TITLE	
F_TRACECODE	TEXT ITEM	TRACE CODE	
F_ZIP_CODE	TEXT ITEM	POSTAL CODE	
F_ZIP_EXTENSION	TEXT ITEM	EXT.	
GENDER	TEXT ITEM	GENDER	
GENDER_IB	BUTTON		
GUEST_PRIV_YN	CHECKBOX	GUEST PRIVACY	
INACTIVE_REASON_IB	BUTTON		
KEYWORD_IB	BUTTON		
LABEL 1 - LABEL 100	DISPLAY ITEM		
LANGUAGE_IB	BUTTON		
LBLADDRESSFRAME	DISPLAY ITEM	ADDRESS INFORMATION	
LBLCOMMUNICATIONFRAME	DISPLAY ITEM	COMMUNICAITONS	
LBLINTERNALFRAME	DISPLAY ITEM	INTERNAL	
LBLPERSONNELFRAME	DISPLAY ITEM	PERSONAL	
LEGAL_COMPANY	TEXT ITEM	COMPANY	
MAIL_YN	CHECKBOX	ALLOW MAIL	
PB_XNAME_POP	BUTTON		
PHONE_YN	CHECKBOX	ALLOW PHONE	
POSTAL_CODE	TEXT ITEM	ZIP CODE	
PROTECTED	LIST		
SMS_YN	CHECKBOX	ALLOW SMS	
SREP_CODE_IB	BUTTON		
STATE_CODE	TEXT ITEM	STATE	
STATE_CODE_IB	BUTTON		
TAX_CATEGORY	TEXT ITEM	TAX CATEGORY	
TAX_CATEGORY_IB	BUTTON		
TAX_OFFICE	TEXT ITEM	TAX OFFICE	
TAX_OFFICE_IB	BUTTON		
TAX_TYPE	TEXT ITEM	TAX TYPE	
TAX_TYPE_IB	BUTTON		
TERRITORY_IB	BUTTON		
TITLE_IB	BUTTON		

TRACECODE_PB	BUTTON		
TXTCONID	DISPLAY ITEM		
UDFC01 – UDFC40	TEXT ITEM		
UDFC01_IB – UDFC40_IB	BUTTON		
UDFD01 – UDFD20	TEXT ITEM		
UDFD01_IB – UDFD05_IB	BUTTON		
UDFN01 – UDFN40	TEXT ITEM		
UDFN01_IB – UDFN40_IB	BUTTON		
URL_BUTTON1	BUTTON		When the object is screen painted on the form, a URL address will need to be entered in the URL field on the button Properties form. When the button is clicked on, the user will be taken to the URL address that was configured for the button. If a URL is not configured for the button and the button is clicked on, nothing will happen.
URL_BUTTON2	BUTTON		When the object is screen painted on the form, a URL address will need to be entered in the URL field on the button Properties form. When the button is clicked on, the user will be taken to the URL address that was configured for the button. If a URL is not configured for the button and the button is clicked on, nothing will happen.
XFIRST_NAME_POP	TEXT ITEM		Enter or displays the alternate first name for the profile.
XLANGUAGE_POP	TEXT ITEM		
XLANGUAGE_POP_IB	BUTTON		
XLAST_NAME_POP	TEXT ITEM		Enter or displays the alternate last name for the profile. When the General>Alternate Name application function and the General>Auto Alternate Name Translate application parameter are set to Y, the cursor is automatically in this field when the Contact Profile screen opens.

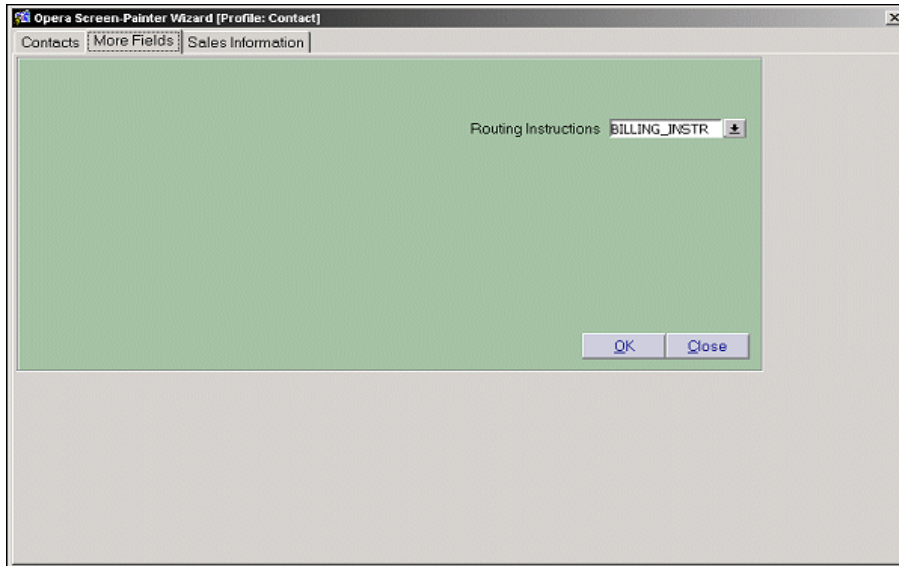
Footer Information

<i>Element</i>	<i>Type</i>		<i>Comment</i>
LAMP_SUBSCRIPTION	DISPLAY ITEM		
LBLADDRESSES	DISPLAY ITEM		

Buttons

<i>Element</i>	<i>Type</i>		<i>Comment</i>
OK	BUTTON		
OPTIONS	BUTTON		
PB_ACCOUNT	BUTTON		
PB_ACTIVITY	BUTTON		
PB_BOOKING	BUTTON		
PB_CLOSE	BUTTON		
PB_EMAIL	BUTTON		
PB_EVENTS	BUTTON		
PB_NEW	BUTTON		
PB_SAVE	BUTTON		

Contact Profile More Fields Screen Painting Elements



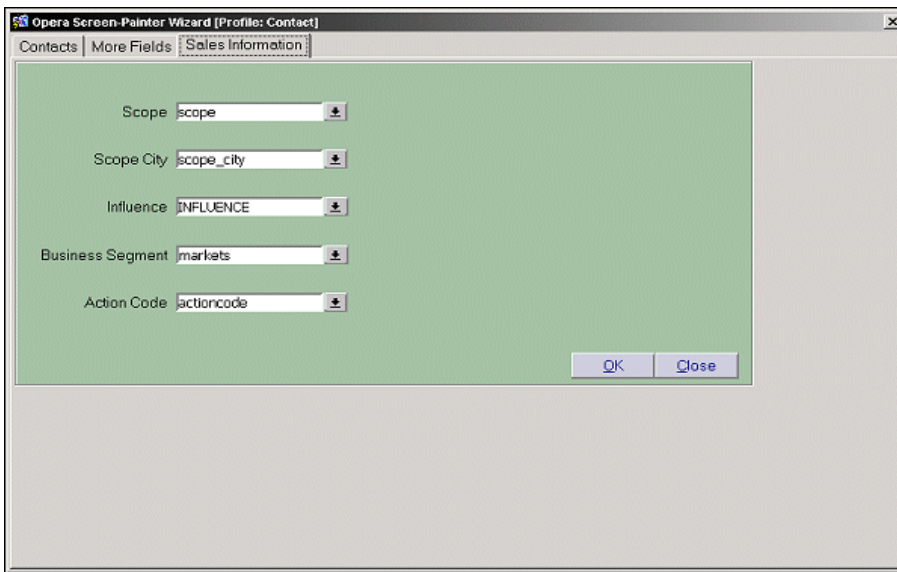
In any field that is setup as a multi-select field, if a manual entry does not match any of the configured values, then the multi-select list of values for the field is displayed.

More Fields Details

Element	Type	Default Prompt Field Name	Comment
AUTO_POPULATE_ROUTING	CHECKBOX	AUTO POPULATE YN	
EMAIL_YN_MORE	CHECKBOX		
F_BILLING_INS	TEXT ITEM	ROUTING INSTRUCTIONS	
GENDER_MORE	TEXT ITEM	GENDER	
GENDER_MORE_IB	BUTTON		
GUEST_PRIV_YN_MORE	CHECKBOX	GUEST PRIVACY	
LABEL 1 - LABEL 20	DISPLAY ITEM		
MAIL_YN_MORE	CHECKBOX	ALLOW MAIL	
NAME_TAX_TYPE	TEXT ITEM		
NAME_TAX_TYPE_IB	BUTTON		
PAYMENT_DUE_DAYS	TEXT ITEM		
PAYMENT_METHOD	TEXT ITEM	PAYMENT	
PAYMENT_METHOD_IB	BUTTON		
PHONE_YN_MORE	CHECKBOX	ALLOW PHONE	
PROTECTED_MORE	LIST	PROTECTED	
SMS_YN_MORE	CHECKBOX	ALLOW SMS	
TAX_CATEGORY_MORE	TEXT ITEM	TAX CATEGORY	
TAX_CATEGORY_MORE_IB	BUTTON		
TAX_OFFICE_MORE	TEXT ITEM	TAX OFFICE	
TAX_OFFICE_MORE_IB	BUTTON		
TAX_PERC1_MORE	TEXT ITEM	TAX PERC1	
TAX_PERC2_MORE	TEXT ITEM	TAX PERC2	
TAX_PERC3_MORE	TEXT ITEM	TAX PERC3	
TAX_PERC4_MORE	TEXT ITEM	TAX PERC4	
TAX_PERC5_MORE	TEXT ITEM	TAX PERC5	
TAX_TYPE_MORE	TEXT ITEM	TAX TYPE	
TAX_TYPE_MORE_IB	BUTTON		
UDFC01_TAB2 – UDFC40_TAB2	TEXT ITEM		

UDFC01_TAB2_IB – UDFC40_TAB2_IB	BUTTON		
UDFD01_TAB2 – UDFD20_TAB2	TEXT ITEM		
UDFD01_TAB2_IB – UDFD05_TAB2_IB	BUTTON		
UDFN01_TAB2 – UDFN40_TAB2	TEXT ITEM		
UDFN01_TAB2_IB – UDFN40_TAB2_IB	BUTTON		
URL_BUTTON1	BUTTON		When the object is screen painted on the form, a URL address will need to be entered in the URL field on the button Properties form. When the button is clicked on, the user will be taken to the URL address that was configured for the button. If a URL is not configured for the button and the button is clicked on, nothing will happen.
URL_BUTTON2	BUTTON		When the object is screen painted on the form, a URL address will need to be entered in the URL field on the button Properties form. When the button is clicked on, the user will be taken to the URL address that was configured for the button. If a URL is not configured for the button and the button is clicked on, nothing will happen.

Contact Profile Sales Information Screen Painting Elements



In any field that is setup as a multi-select field, if a manual entry does not match any of the configured values, then the multi-select list of values for the field is displayed.

Sales Information Details			
<i>Element</i>	<i>Type</i>	<i>Default Prompt Field Name</i>	<i>Comment</i>
ACTIONCODE_IB	BUTTON		
F_ACTIONCODE	TEXT ITEM	ACTION CODE	
F_INFLUENCE	TEXT ITEM	INFLUENCE	
F_MARKETS	TEXT ITEM	BUSINESS SEGMENT	
F_SCOPE	TEXT ITEM	SCOPE	
F_SCOPE_CITY	TEXT ITEM	SCOPE CITY	
INFLUENCE_IB	BUTTON		

MARKETS_IB	BUTTON		
PB_SALES_CLOSE	BUTTON		
PB_SALES_OK	BUTTON		
SCOPE_CITY_IB	BUTTON		
SCOPE_IB	BUTTON		
URL_BUTTON1_TAB1	BUTTON		When the object is screen painted on the form, a URL address will need to be entered in the URL field on the button Properties form. When the button is clicked on, the user will be taken to the URL address that was configured for the button. If a URL is not configured for the button and the button is clicked on, nothing will happen.
URL_BUTTON2_TAB2	BUTTON		When the object is screen painted on the form, a URL address will need to be entered in the URL field on the button Properties form. When the button is clicked on, the user will be taken to the URL address that was configured for the button. If a URL is not configured for the button and the button is clicked on, nothing will happen.